

# Land Information and its Interpretation

*A 6-hour, two-session course for professional staff of public and private sector organisations who need to access, assemble, interpret and use land information*

## Session One (3 hours)

### What Information ?

Land Status in Victoria  
Freehold land – interests, encumbrances, restrictions on title  
Crown land – its status, control and management  
Roads, reserves and easements  
Native Title – determinations and settlements  
Planning scheme zones and overlays  
Aboriginal Heritage significance  
Geographic Place Names

### Reading the Cadastre

A Parish Plan and a Crown grant  
A modern Plan of Subdivision and its derivatives  
A modern title document and its sources  
Old subdivisions, Transfers in Part, etc

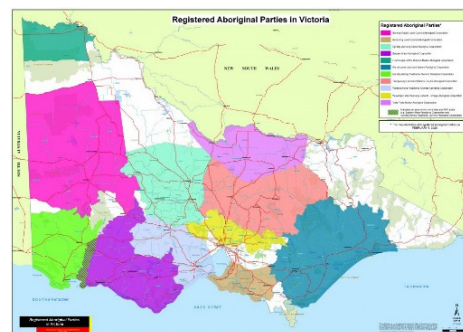
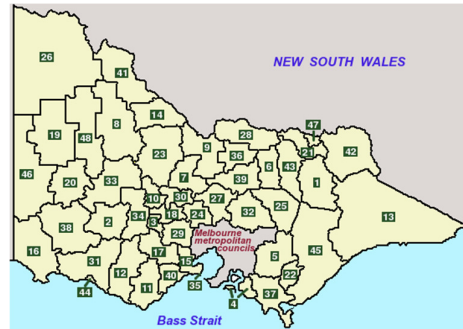
## Session Two (3 hours)

### Cadastral Law

The Land Act, Transfer of Land Act, Property Law Act, Surveying Act, Native Title Act etc  
The role of the Courts and VCAT  
Registered and unregistered dealings  
Guarantees, indefeasibility and exceptions  
Adverse possession; the doctrine of accretion

### Sources of Information

*(on-screen walk-through)*  
Google Maps and Streetview  
Mapshare, Vicmap Digital Property  
Landata, Spear and LASSI  
Searching freehold titles, Crown land status,  
Searching Gazettes, Legislation and Hansard  
Using Austlii and case-law



## Cost

\$550 per student  
Inclusive of GST, course notes, and certificate of attendance  
Discounts for host organisation

## Our Presenter

Robert Steel OAM  
*Licensed Surveyor*  
*Association of Consulting Surveyors, Victoria*  
*Past President, Institution of Surveyors Victoria*

## Registrations

Fiona Sellars  
*Training Course Coordinator*  
[fiona@publicland.com.au](mailto:fiona@publicland.com.au)  
(03) 9534 5128

**Public Land Consultancy**  
ABN 69 067 045 520  
Principal: David Gabriel-Jones  
Email: [dgj@publicland.com.au](mailto:dgj@publicland.com.au)

27 / 539 St Kilda Road  
Melbourne, VIC 3004  
phone: (03) 9534 5128  
or 9525 1096

postal: PO Box 2251  
St Kilda West, VIC 3182  
mobile: 0412 134 243  
[www.publicland.com.au](http://www.publicland.com.au)